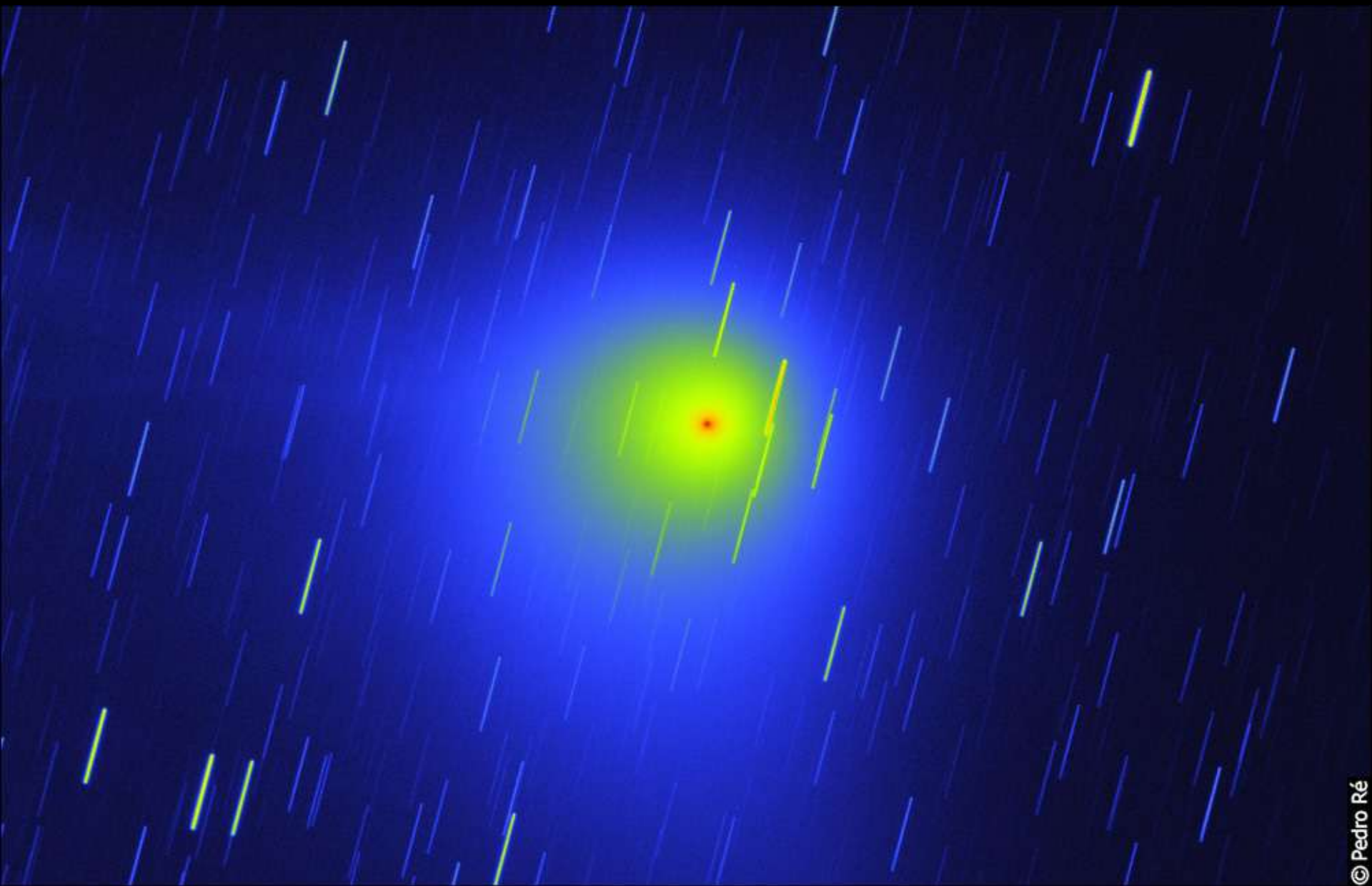


Imaging Comets





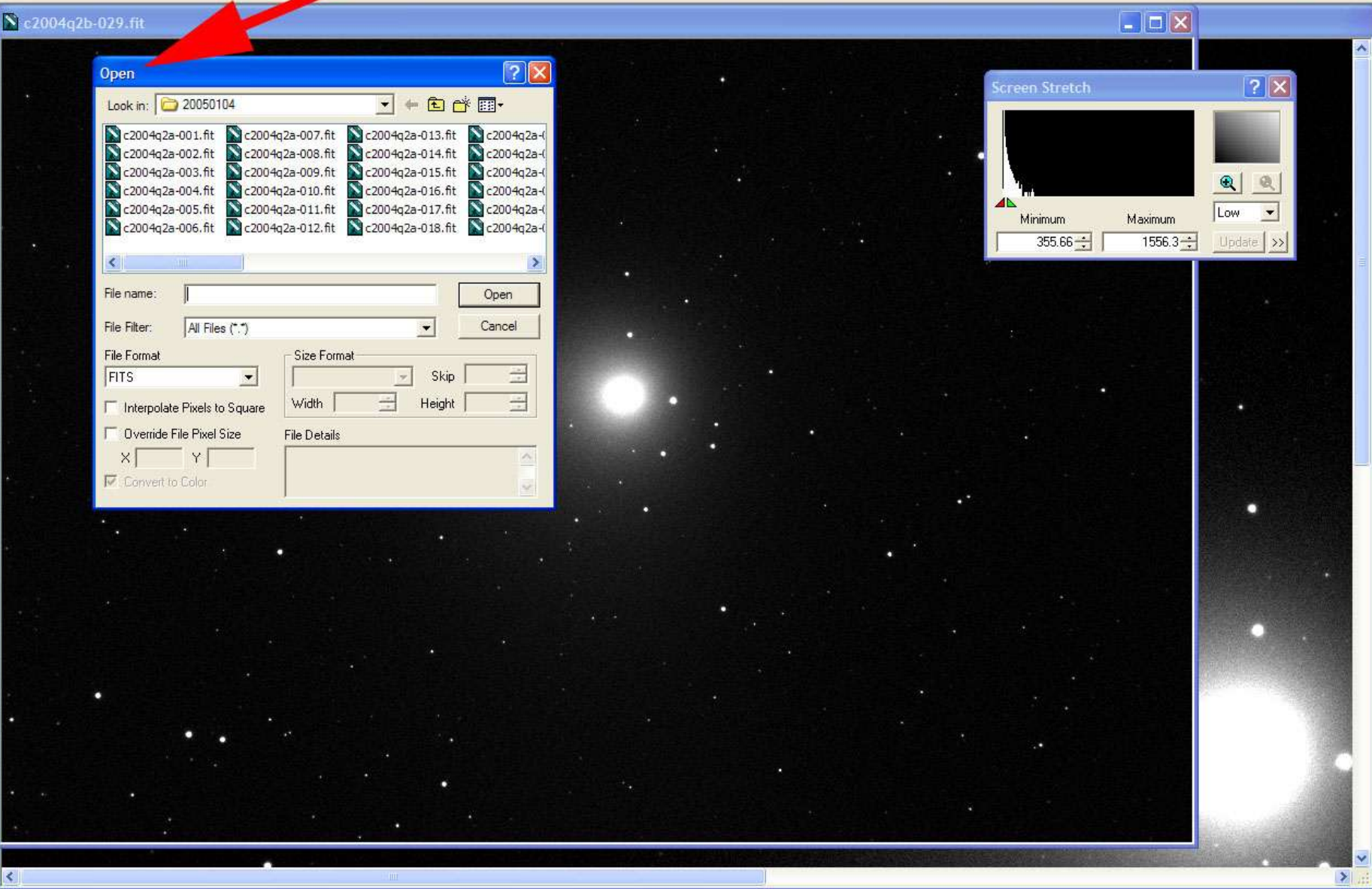
C/2004 Q2 (Machholz). Takahashi FS102 F/8, ST-10XE, 30min 30x1min
Sum, Log Scaling (20050104 19:53UTC). False color.

Deep Impact

A Smashing Success

© Pedro Ré

9P/Tempel. Takahasi FS128 F/8.1, ST-10XE, 15min 10x1min, Sum (20050601 21:37UTC)



Open

Look in: 20050104

c2004q2a-001.fit	c2004q2a-007.fit	c2004q2a-013.fit	c2004q2a-019.fit
c2004q2a-002.fit	c2004q2a-008.fit	c2004q2a-014.fit	c2004q2a-020.fit
c2004q2a-003.fit	c2004q2a-009.fit	c2004q2a-015.fit	c2004q2a-021.fit
c2004q2a-004.fit	c2004q2a-010.fit	c2004q2a-016.fit	c2004q2a-022.fit
c2004q2a-005.fit	c2004q2a-011.fit	c2004q2a-017.fit	c2004q2a-023.fit
c2004q2a-006.fit	c2004q2a-012.fit	c2004q2a-018.fit	c2004q2a-024.fit

File name: Open

File Filter: All Files (*.*) Cancel

File Format: FITS

Size Format: Width: Height: Skip:

☐ Interpolate Pixels to Square

☐ Override File Pixel Size X: Y:

☒ Convert to Color

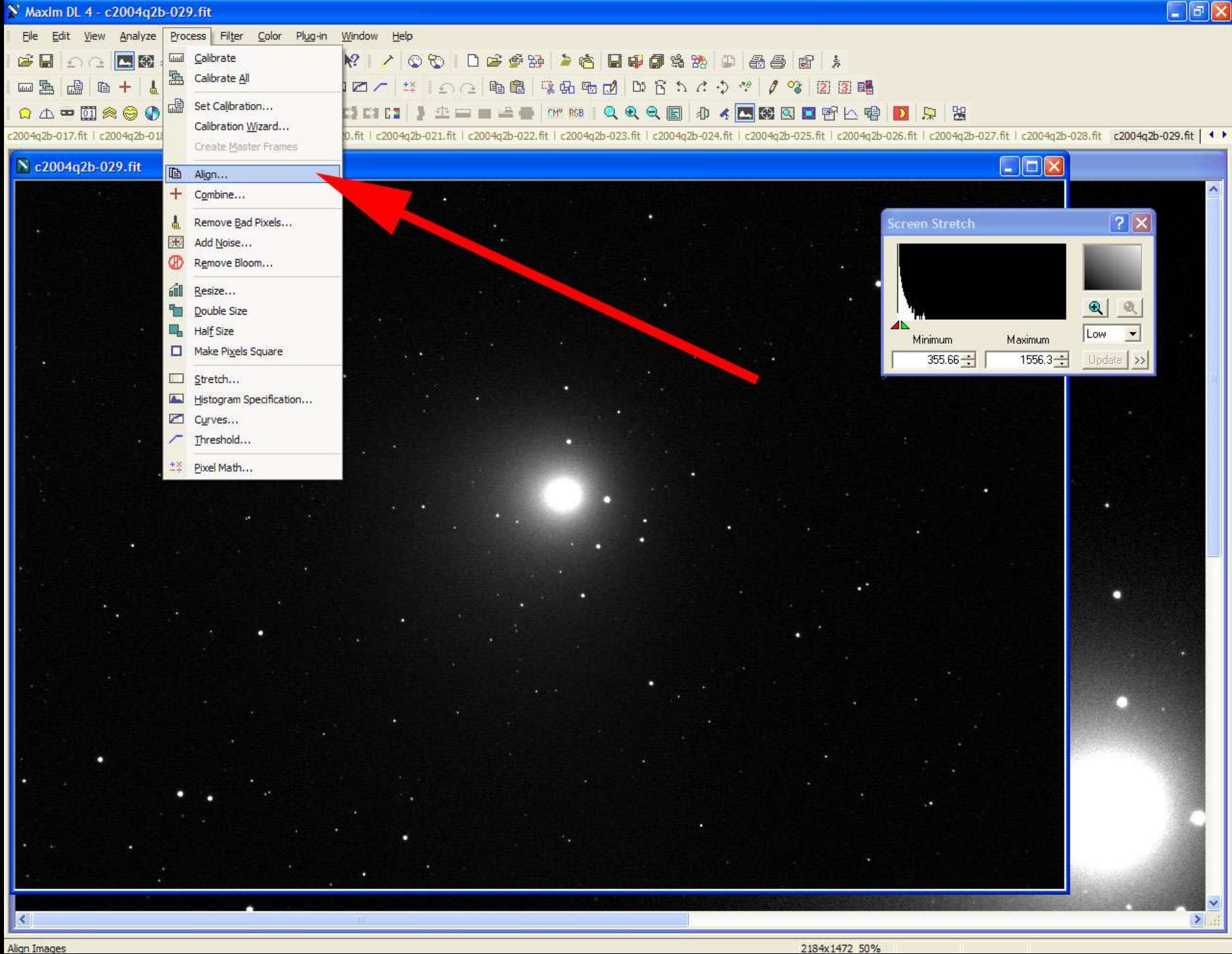
File Details:

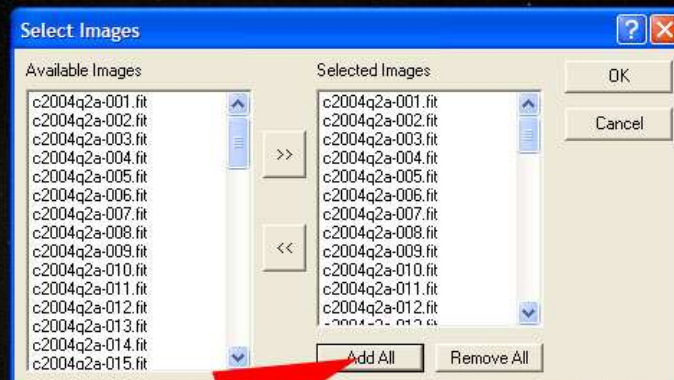
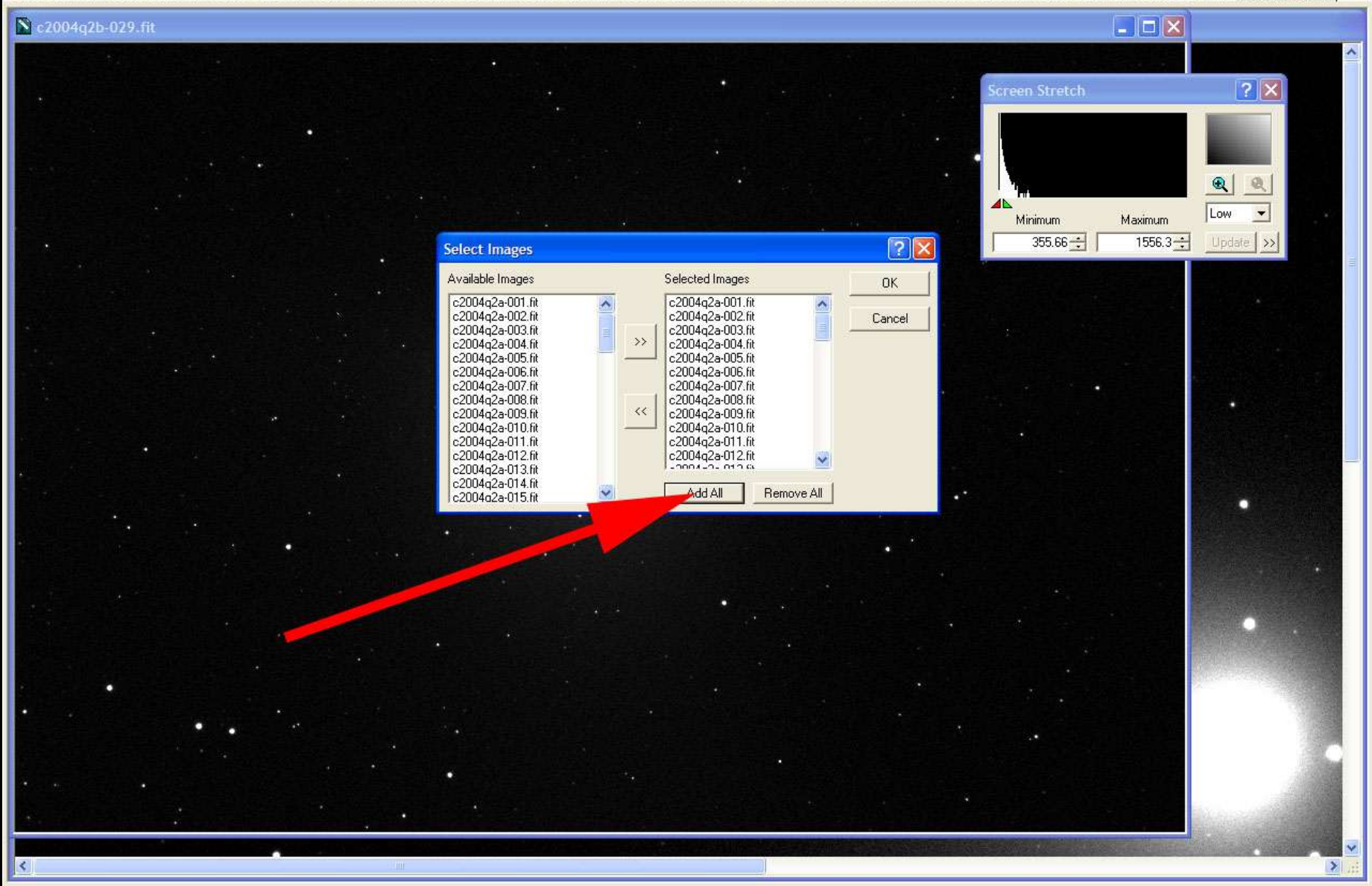
Screen Stretch

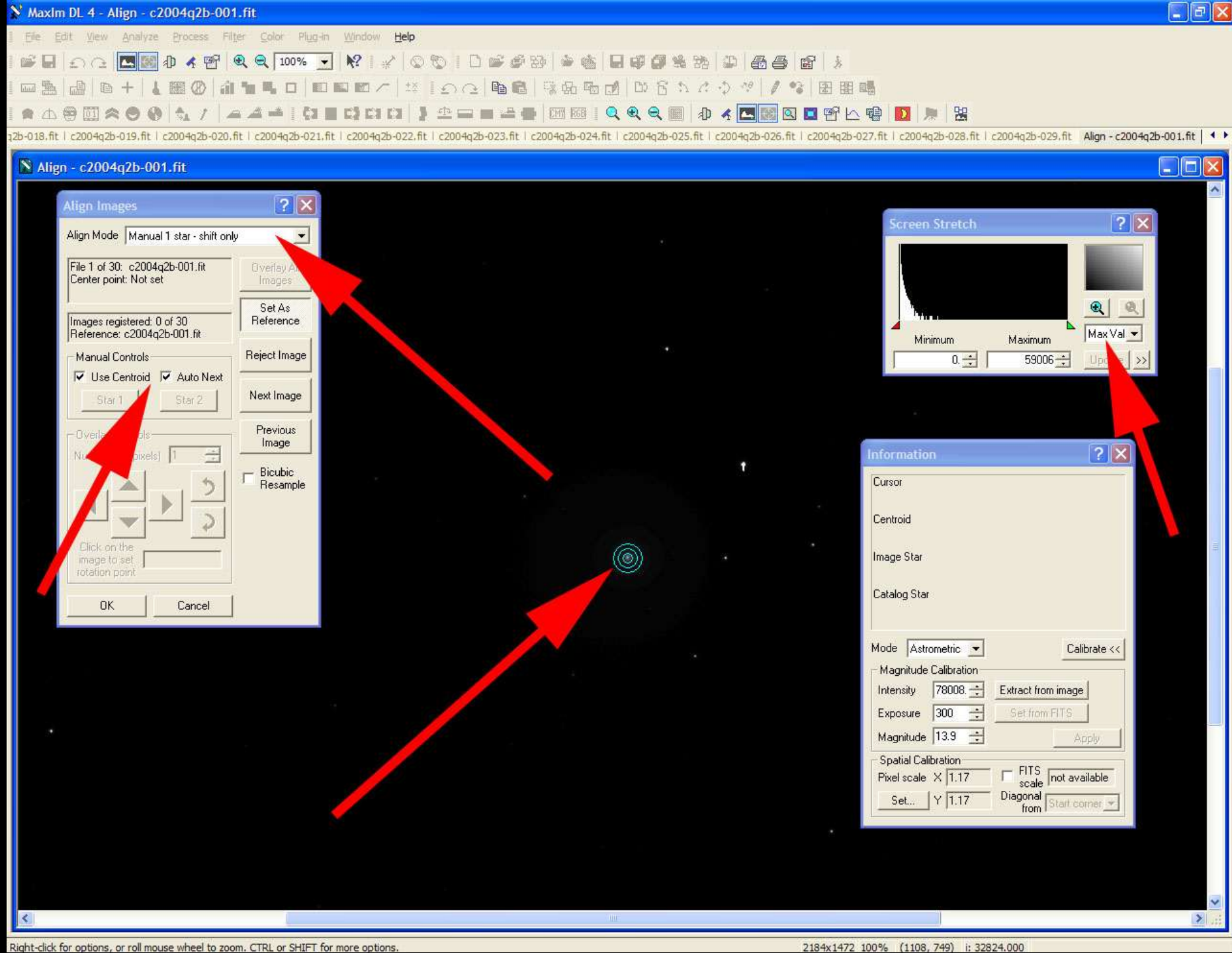
Minimum: 355.66 Maximum: 1556.3

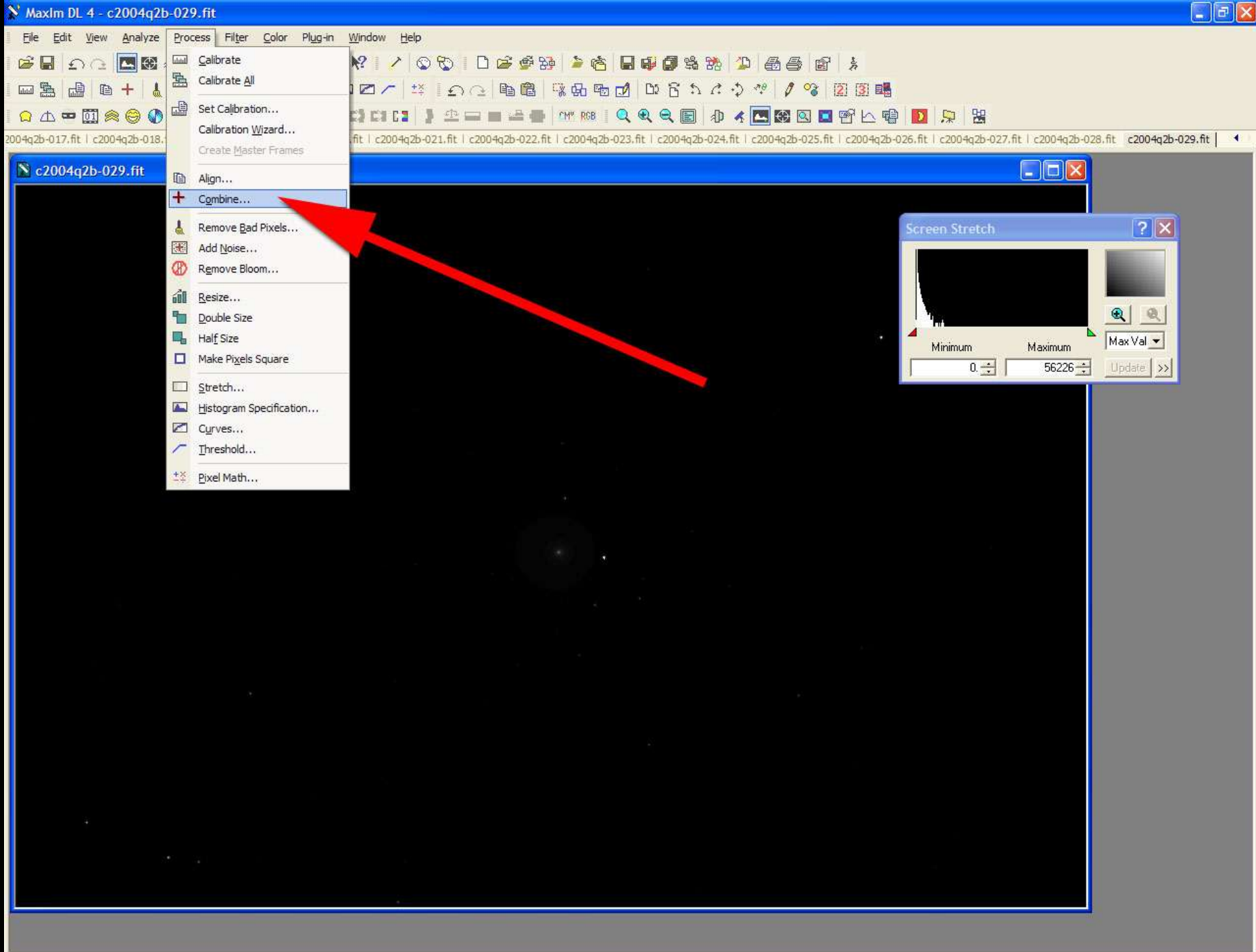
Low

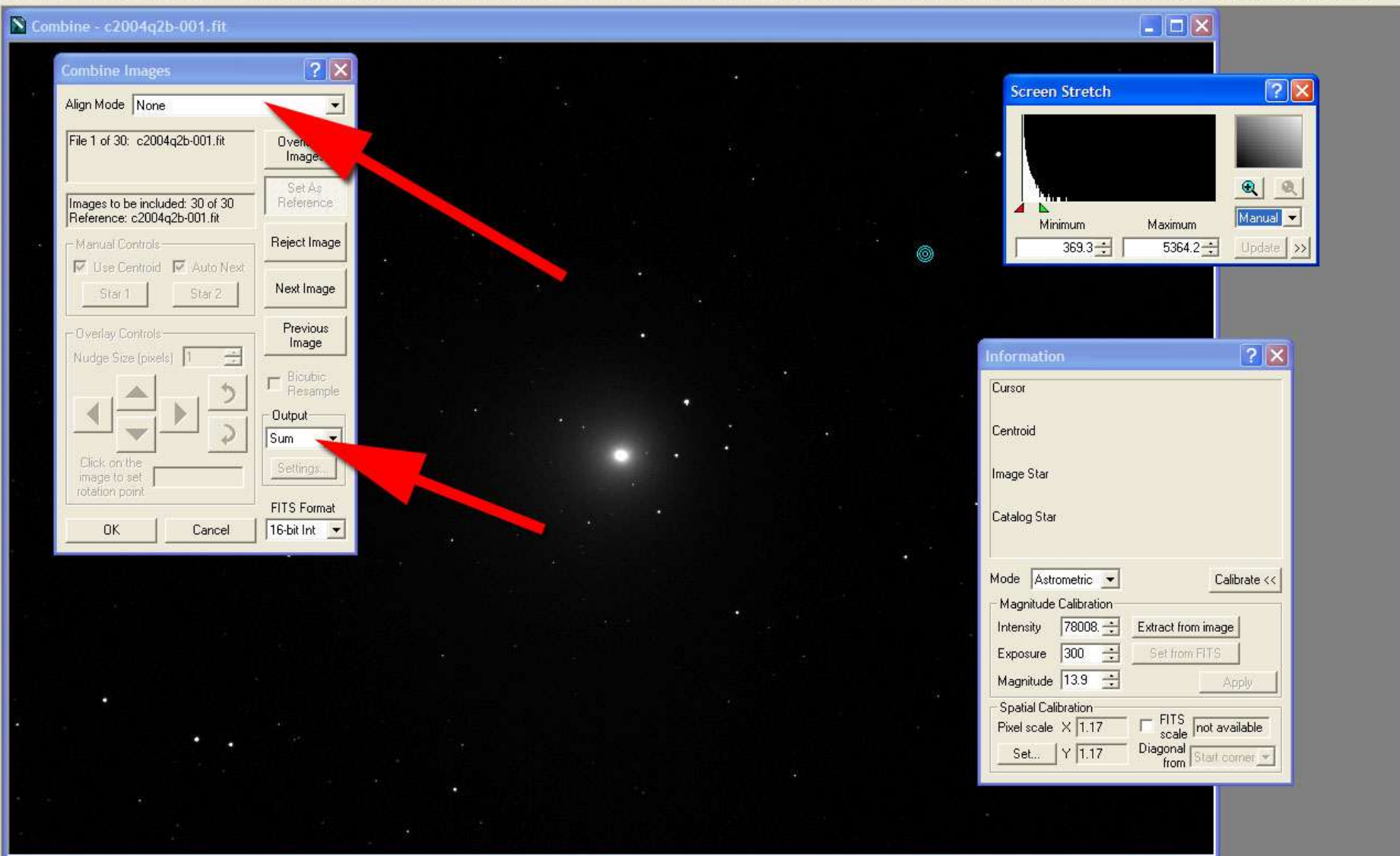
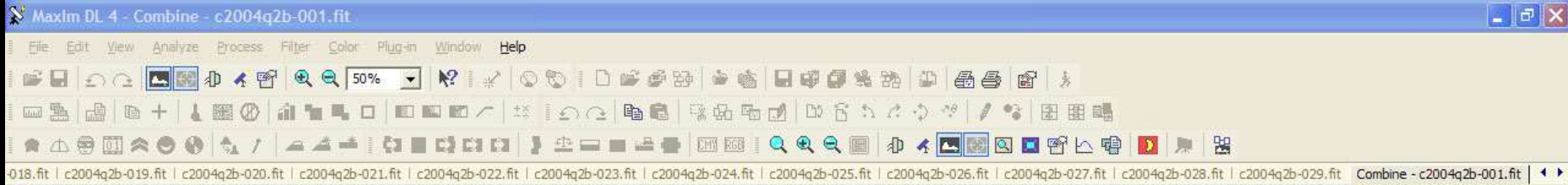
Update >>

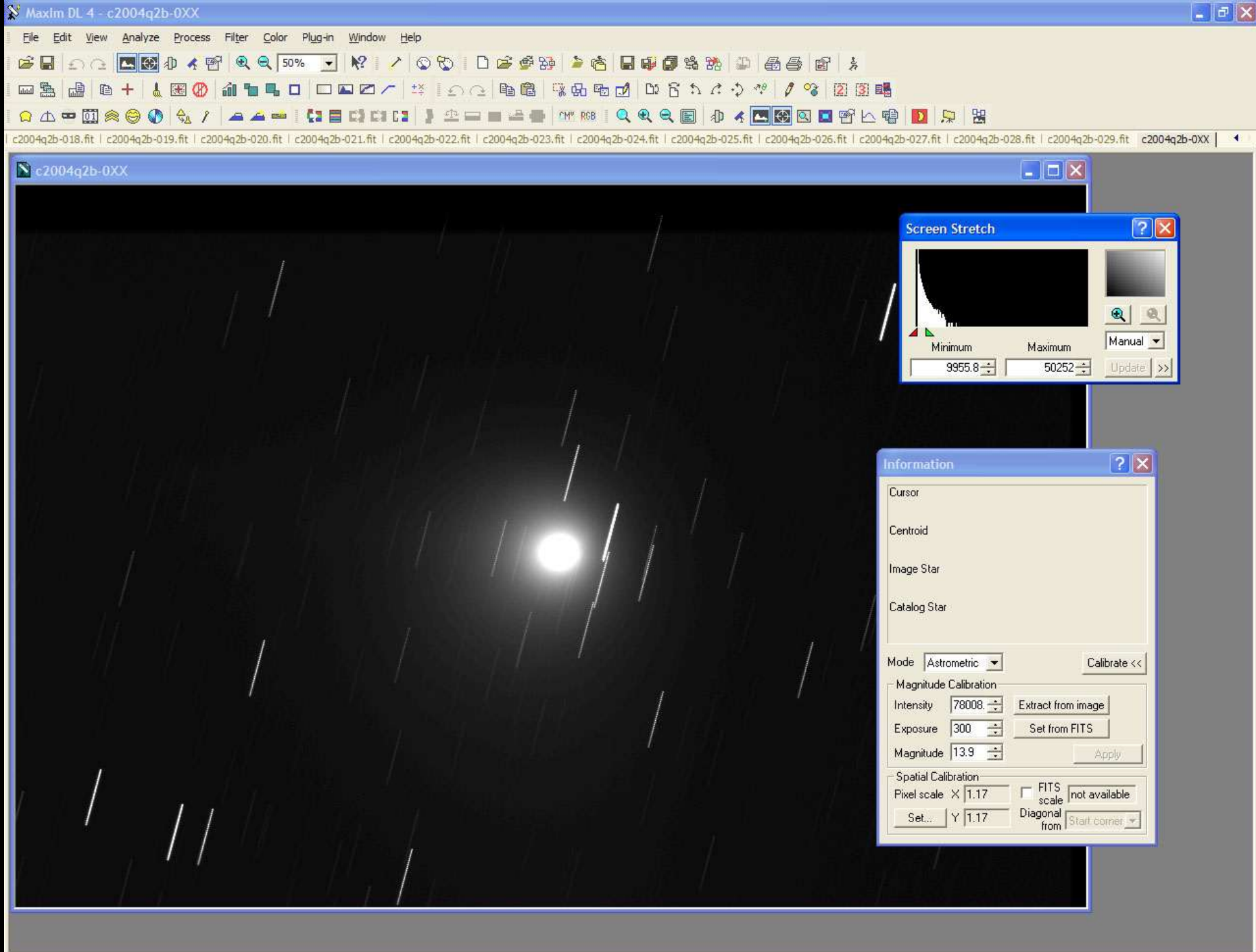


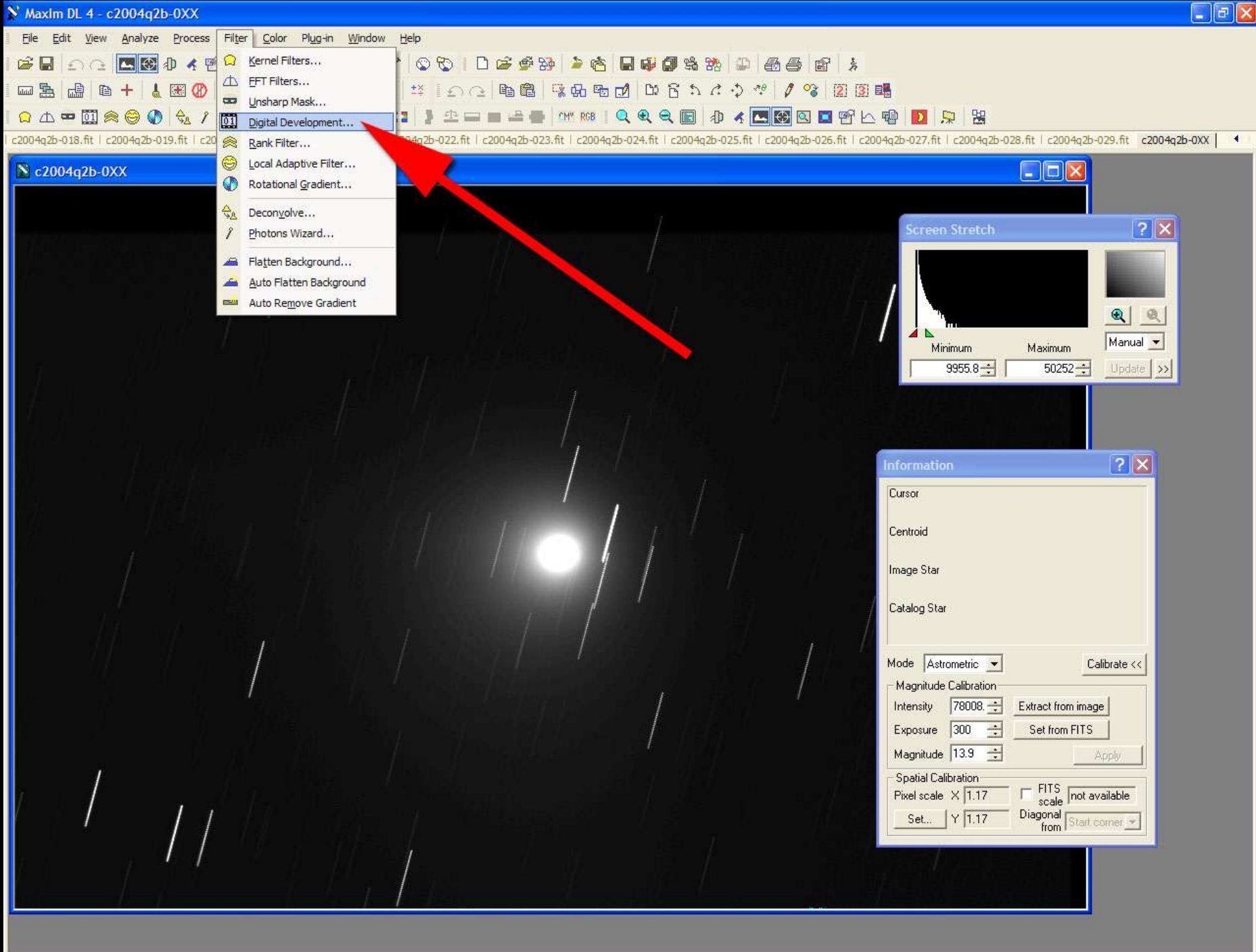


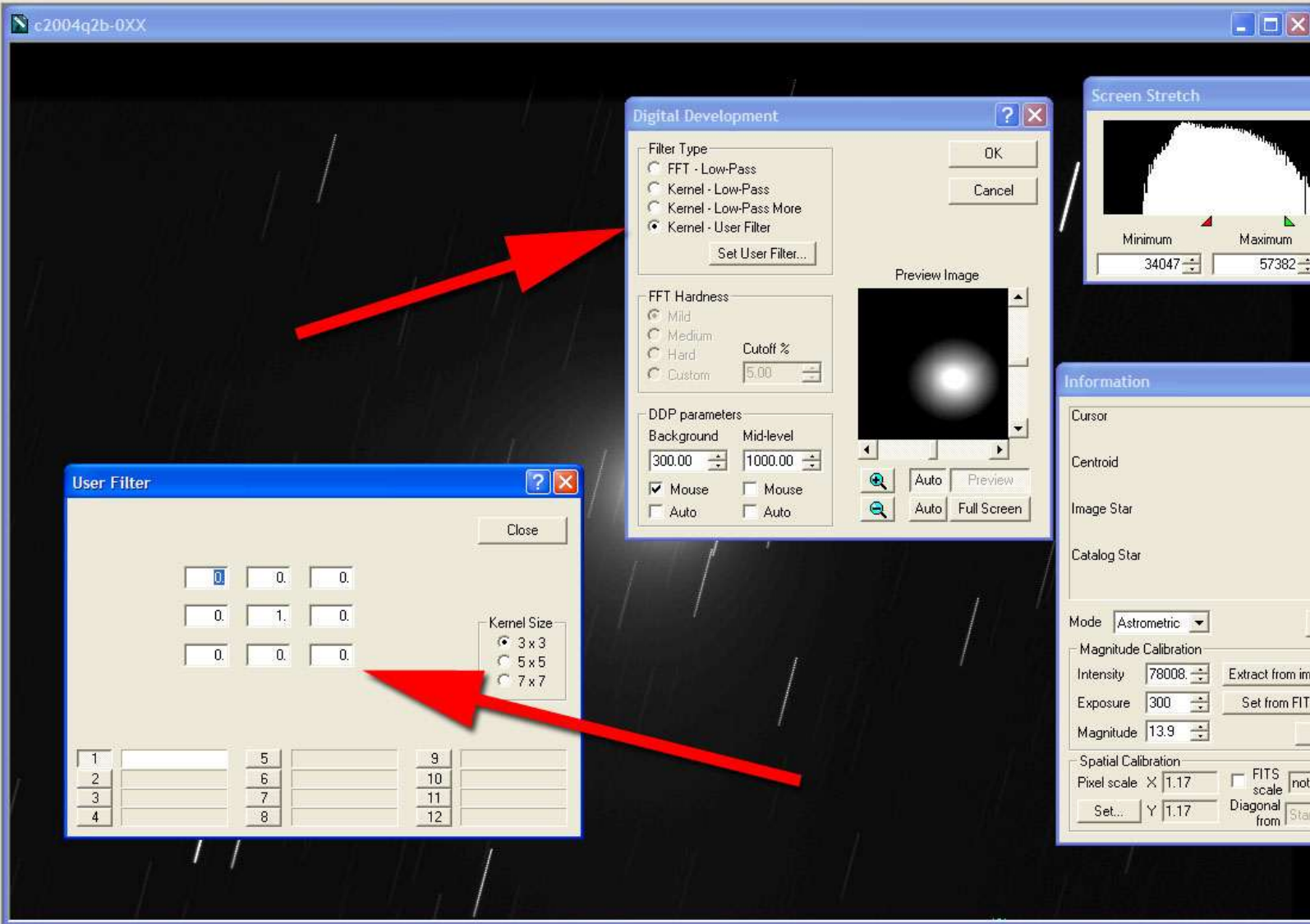












Digital Development

Filter Type

- ☐ FFT - Low-Pass
- ☐ Kernel - Low-Pass
- ☐ Kernel - Low-Pass More
- ☒ Kernel - User Filter

Set User Filter...

FFT Hardness

- ☒ Mild
- ☐ Medium
- ☐ Hard
- ☐ Custom

Cutoff %

5.00

DDP parameters

Background: 300.00 Mid-level: 1000.00

☒ Mouse ☐ Mouse

☐ Auto ☐ Auto

Preview Image

Auto Preview

Auto Full Screen

OK Cancel

Screen Stretch

Minimum: 34047 Maximum: 57382

Update >>

Medium

Information

Cursor

Centroid

Image Star

Catalog Star

Mode: Astrometric

Calibrate <<

Magnitude Calibration

Intensity: 78008 Extract from image

Exposure: 300 Set from FITS

Magnitude: 13.9 Apply

Spatial Calibration

Pixel scale X: 1.17 Y: 1.17

FITS scale: not available

Diagonal from: Start corner

User Filter

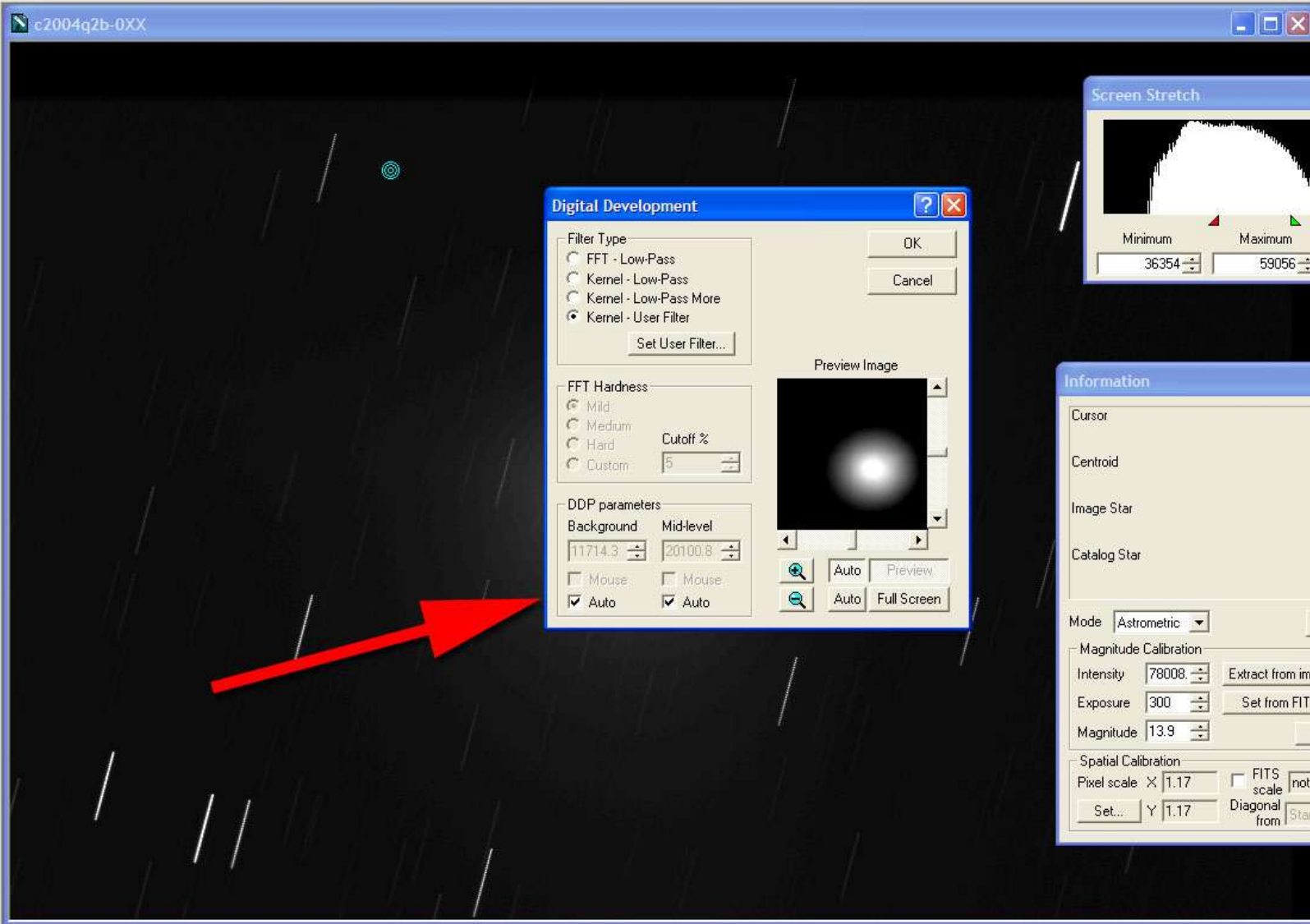
Close

0	0	0
0	1	0
0	0	0

Kernel Size

- ☒ 3 x 3
- ☐ 5 x 5
- ☐ 7 x 7

1		5		9
2		6		10
3		7		11
4		8		12



Digital Development

Filter Type

- ☐ FFT - Low-Pass
- ☐ Kernel - Low-Pass
- ☐ Kernel - Low-Pass More
- ☒ Kernel - User Filter

Set User Filter...

OK

Cancel

FFT Hardness

- ☒ Mild
- ☐ Medium
- ☐ Hard
- ☐ Custom

Cutoff %

DDP parameters

Background

Mid-level

Mouse

Auto

Preview Image

Auto

Preview

Auto

Full Screen

Screen Stretch

Minimum

Maximum

Medium

Update

Information

Cursor

Centroid

Image Star

Catalog Star

Mode

Astrometric

Calibrate <<

Magnitude Calibration

Intensity

Exposure

Magnitude

Apply

Spatial Calibration

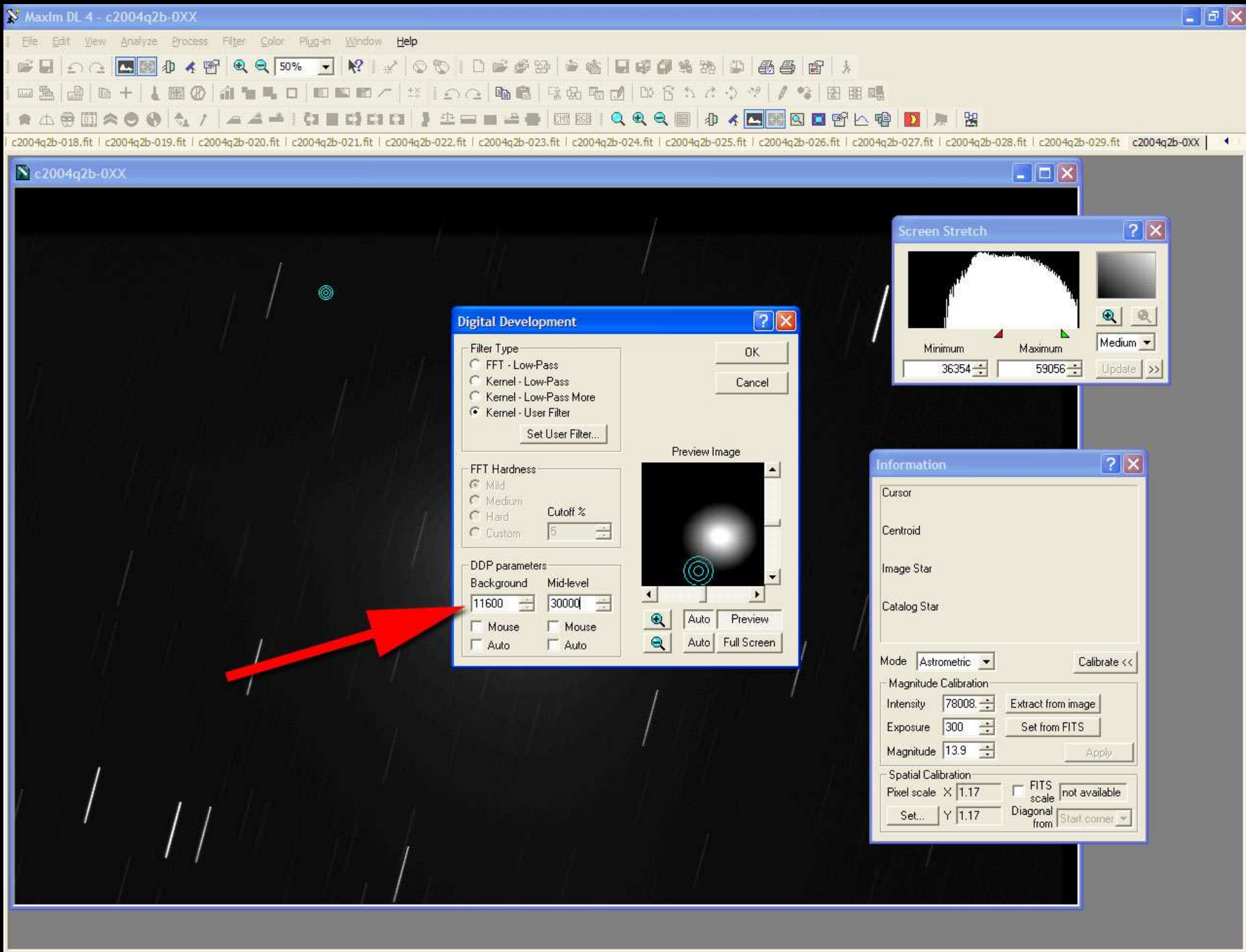
Pixel scale

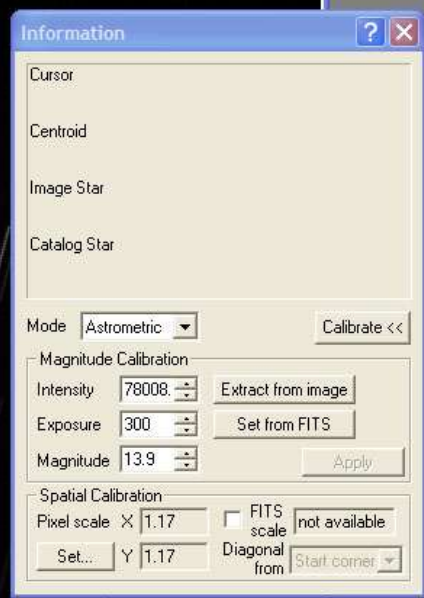
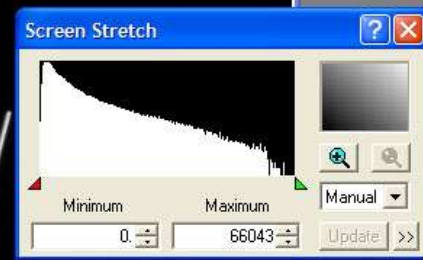
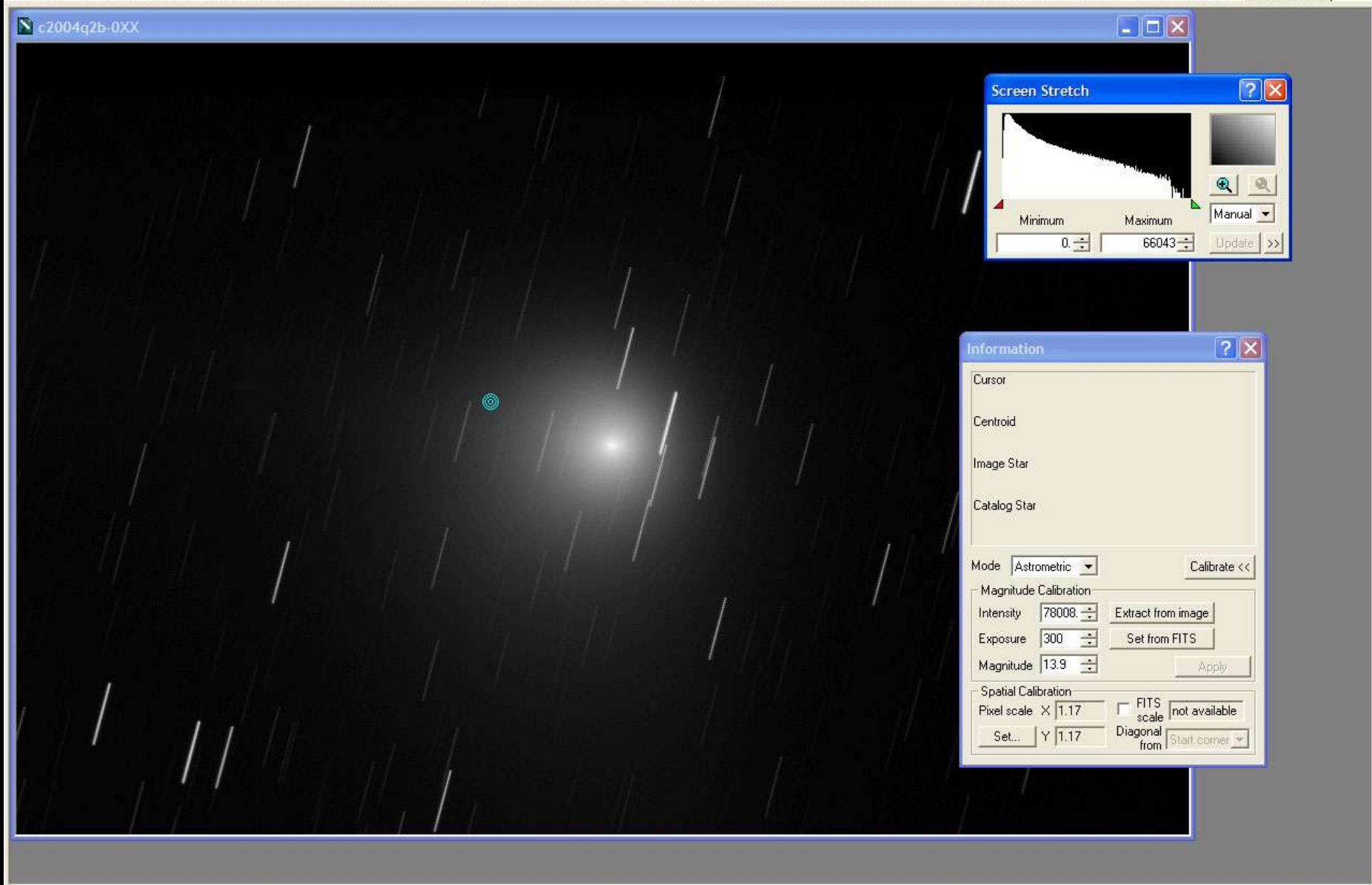
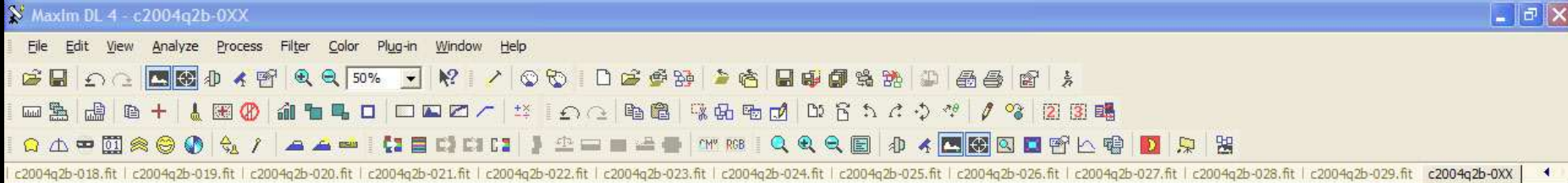
Y

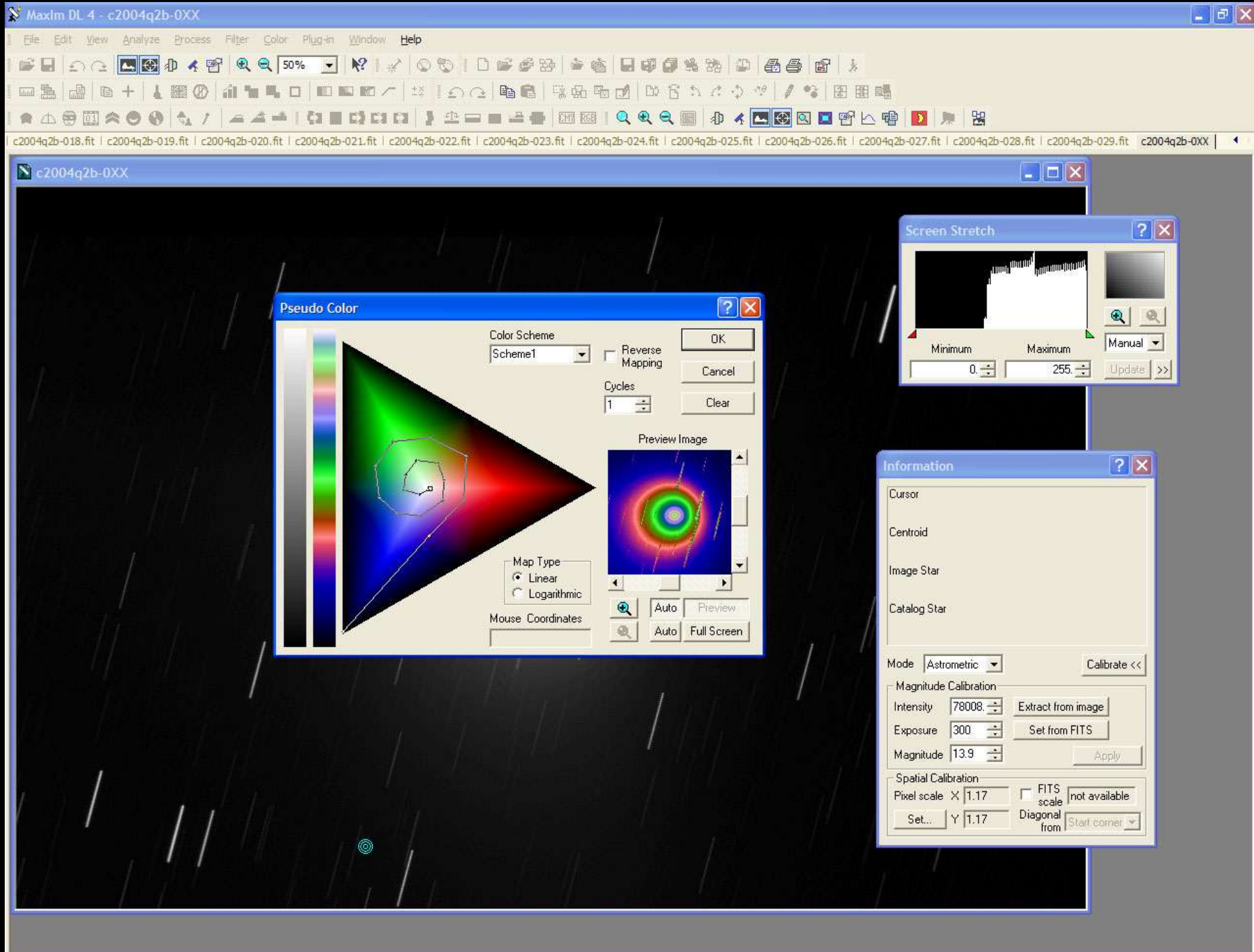
FITS scale

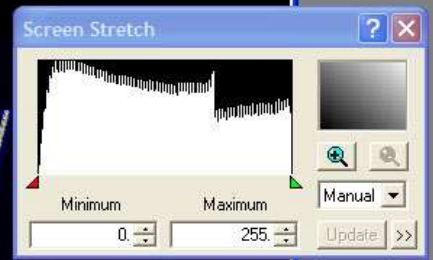
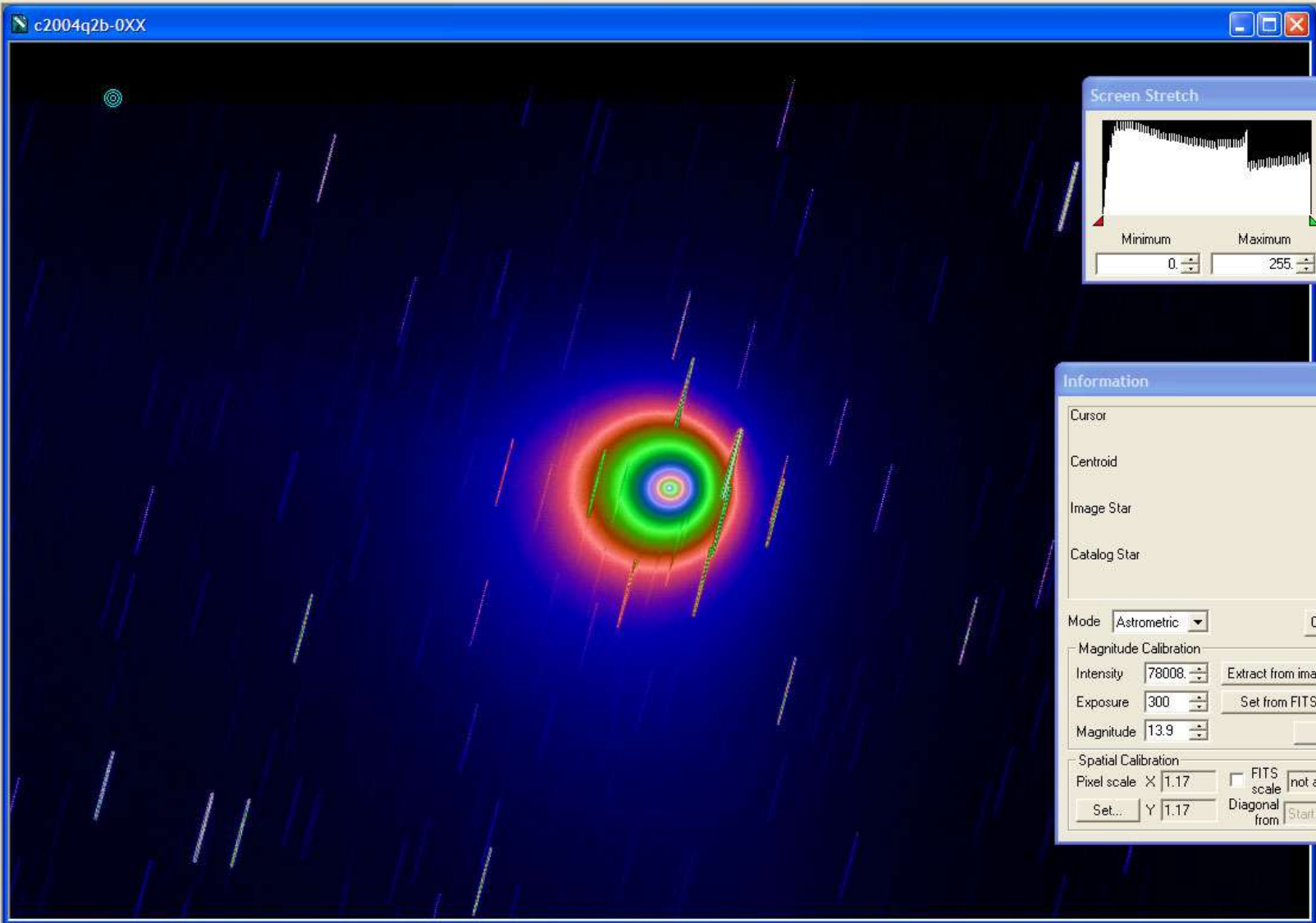
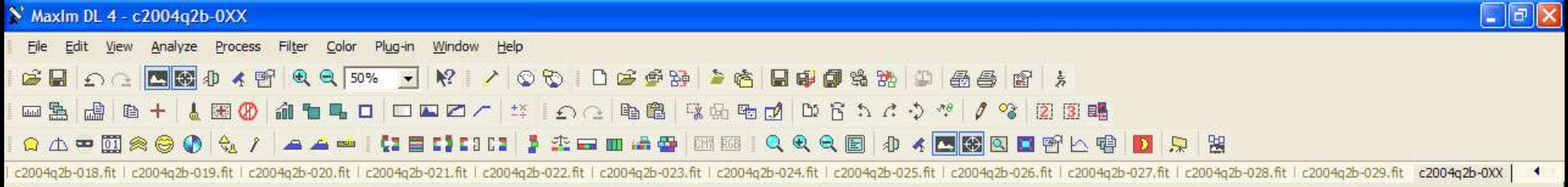
Diagonal from

Start corner









The "Information" dialog box is open, displaying various calibration and measurement parameters. It includes sections for "Cursor", "Centroid", "Image Star", and "Catalog Star". The "Mode" is set to "Astrometric". Under "Magnitude Calibration", the "Intensity" is 78008, "Exposure" is 300, and "Magnitude" is 13.9. There are buttons for "Extract from image", "Set from FITS", and "Apply". The "Spatial Calibration" section shows "Pixel scale" X and Y both at 1.17, with a "Set..." button. It also includes a checkbox for "FITS scale" (currently unchecked and labeled "not available") and a "Diagonal from" dropdown menu set to "Start corner". A "Calibrate <<" button is located at the top right of the dialog.

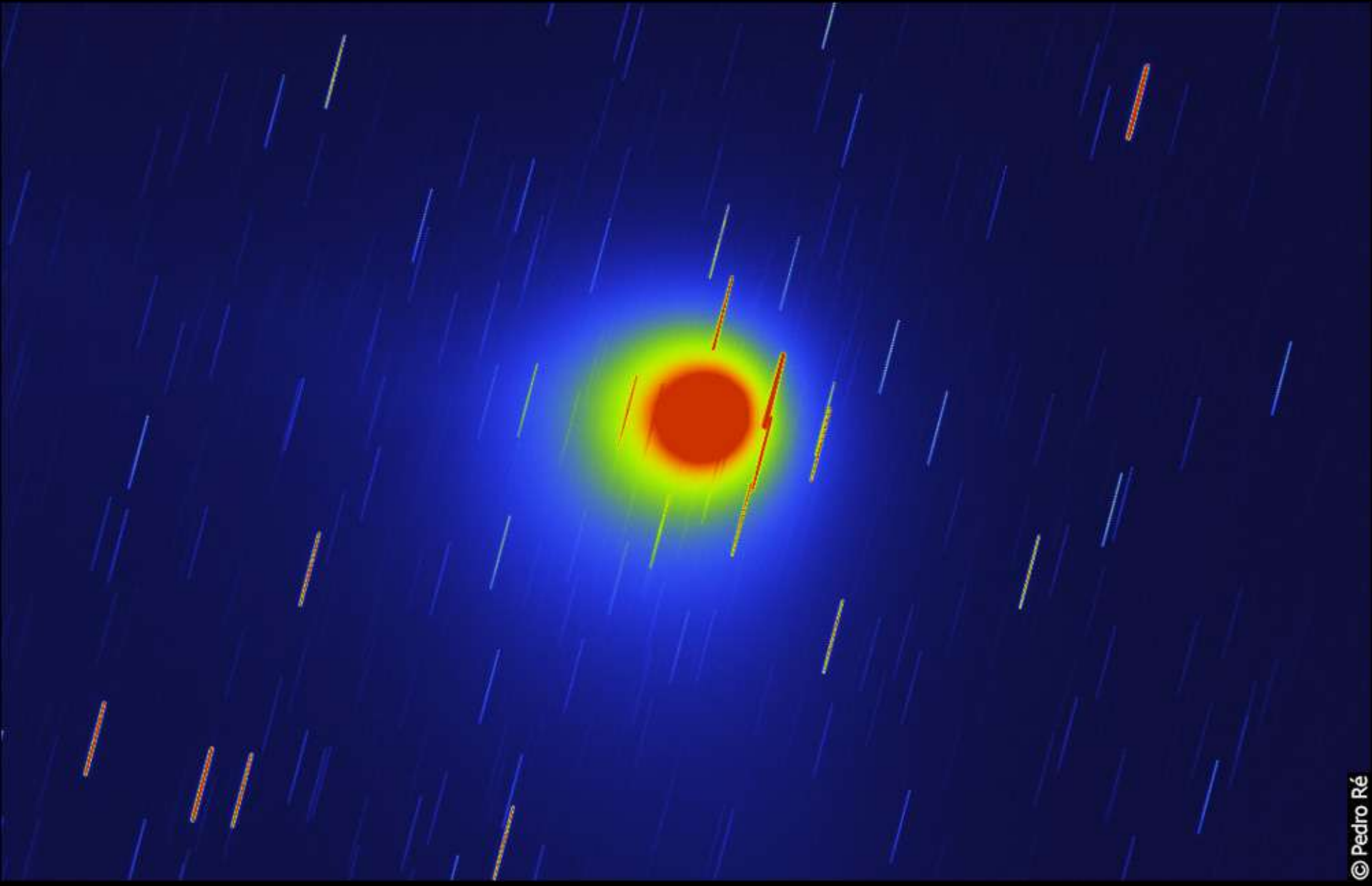
C/2004 Q2 (Machholz). Takahashi FS102 F/8, ST-10XE, 30min 30x1min
Sum (20050104 19:53UTC).

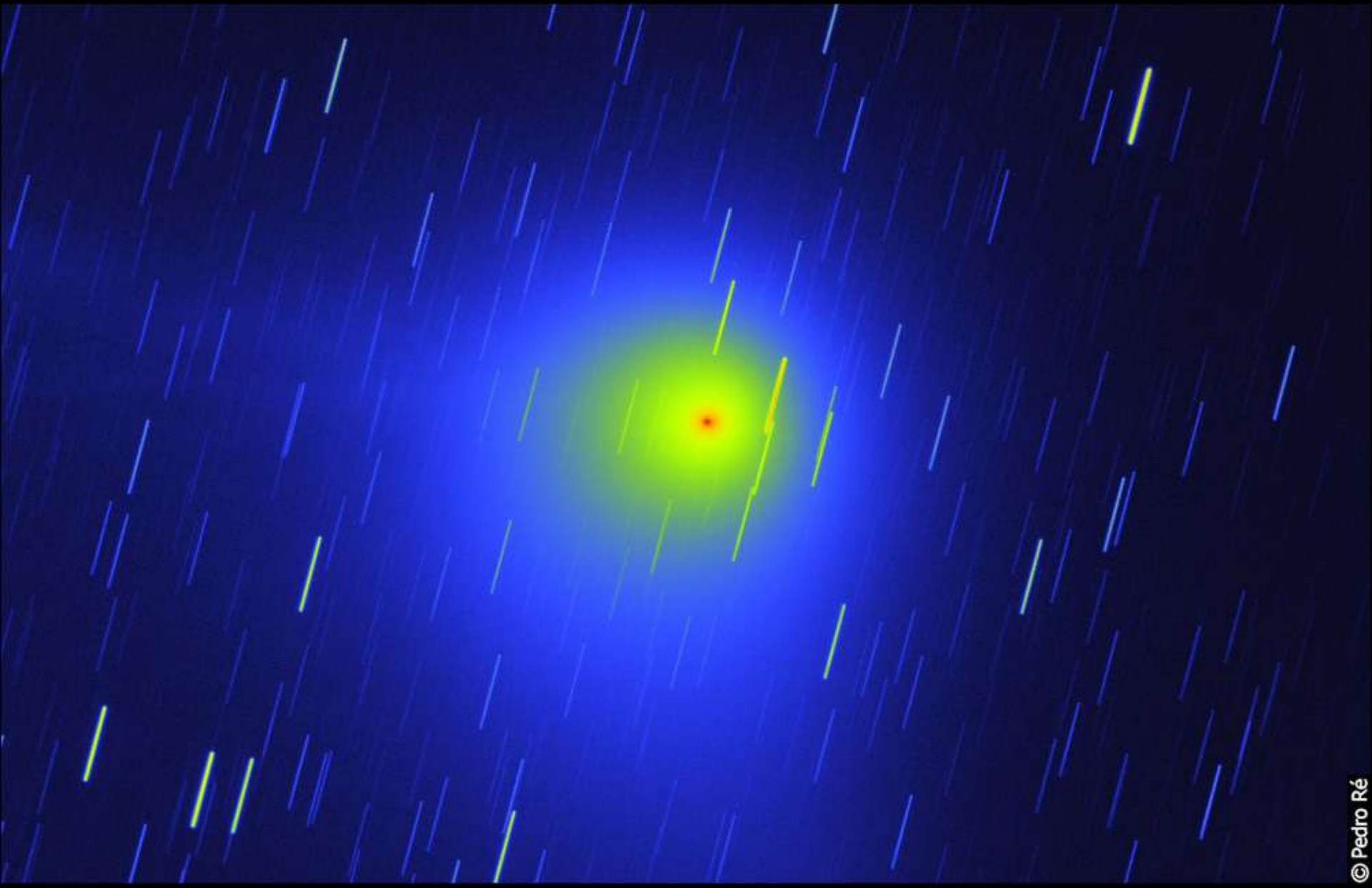


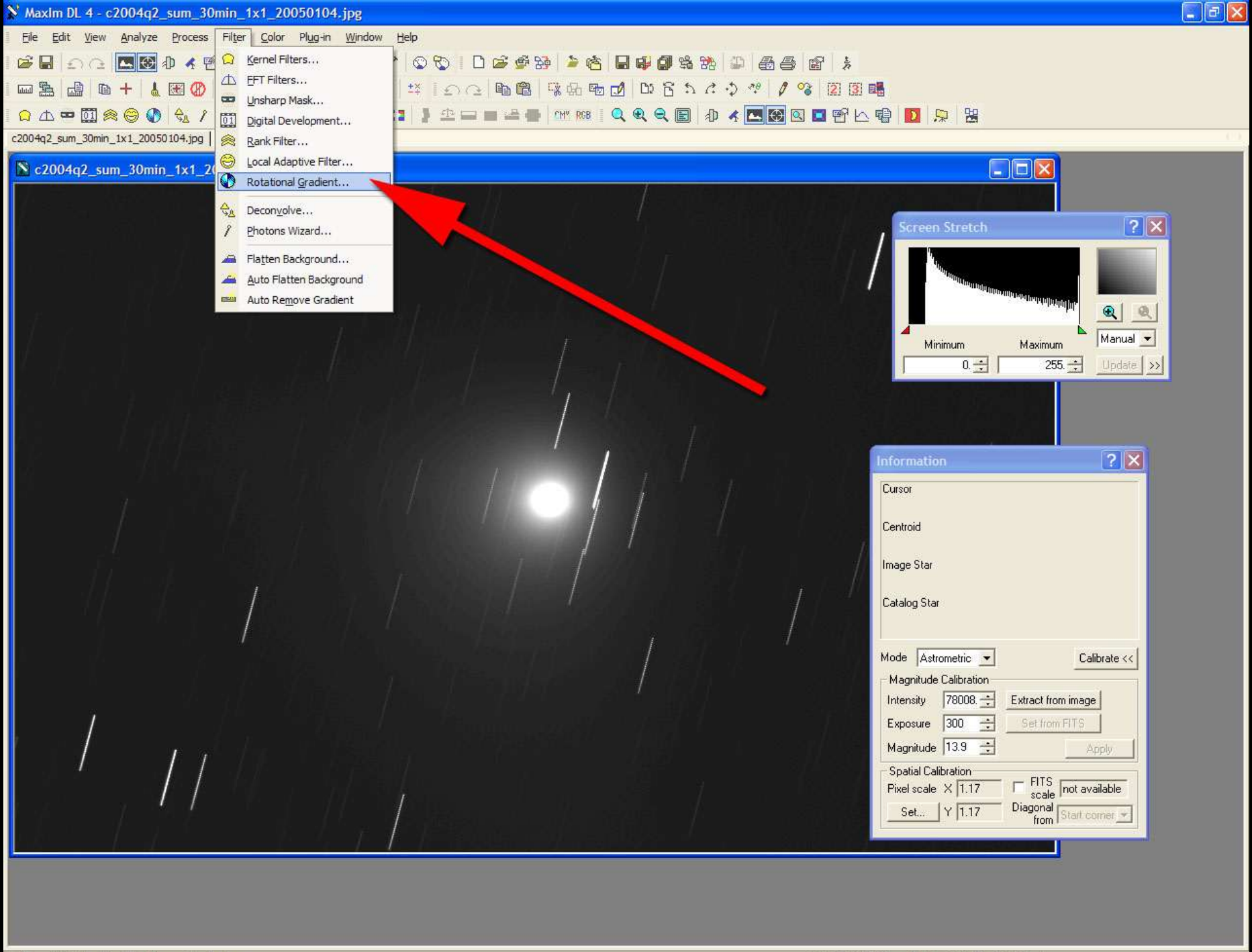
C/2004 Q2 (Machholz). Takahashi FS102 F/8, ST-10XE, 30min
30x1min Sum, Log Scaling (20050104 19:53UTC).



C/2004 Q2 (Machholz). Takahashi FS102 F/8, ST-10XE, 30min 30x1min Sum,
Log Scaling (binning 2x2) (20050104 19:11UTC).









c2004q2_sum_30min_1x1_20050104.jpg |

